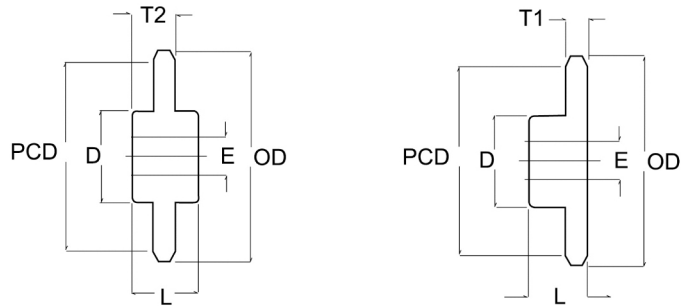


## 6,000lb / 7,500lb

### Conveyor chain sprockets – steel fabricated

Available on request

- Larger boss diameters and distance through
- Electro galvanised
- Other pitches
- Teeth machine to accommodate flange rollers
- Plate wheels
- Flame hardened teeth
- Bush chains
- Split sprockets



Chain Pitch	No. of teeth	Pitch circle diameter P.C.D (mm)	Outer diameter O.D (mm)	Boss one side T1 (mm)	Boss Central T2 (mm)	Boss single & central dis. Thru L (mm)	Boss dia. Single & central D (mm)	Max Bore E (mm)
2"	8	132.80	143.50	12	44.50	88.90	90	50.8
2"	10	164.30	175.20	12	44.50	88.90	90	50.8
2"	12	196.30	212.10	12	44.50	88.90	90	50.8
2"	16	260.40	274.30	12	44.50	88.90	90	50.8
3"	8	199.10	214.60	12	44.50	88.90	90	50.8
3"	10	246.60	262.10	12	44.50	88.90	90	50.8
3"	12	294.40	313.70	12	44.50	88.90	90	50.8
3"	16	390.70	412.80	12	44.50	88.90	90	50.8
4"	8	265.40	276.90	12	44.50	88.90	90	50.8
4"	10	328.70	340.00	12	44.50	88.90	90	50.8
4"	12	392.50	411.50	12	44.50	88.90	90	50.8
4"	16	520.70	542.30	12	44.50	88.90	90	50.8
6"	8	398.30	411.50	12	44.50	88.90	90	50.8
6"	10	493.50	504.00	12	44.50	88.90	90	50.8
6"	12	588.80	600.70	12	44.50	88.90	90	50.8
6"	16	781.30	797.60	12	44.50	88.90	90	50.8

## 12,000lb / 15,000lb

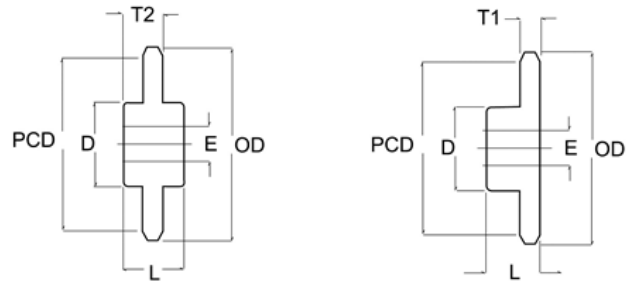
Chain Pitch	No. of teeth	Pitch circle diameter P.C.D (mm)	Outer diameter O.D (mm)	Boss one side T1 (mm)	Boss Central T2 (mm)	Boss single & central dis. Thru L (mm)	Boss dia. Single & central D (mm)	Max Bore E (mm)
3"	8	199.10	218.40	16	50.8	101.60	100	63.5
3"	10	246.60	280.00	16	50.8	101.60	100	63.5
3"	12	294.40	317.50	16	50.8	101.60	100	63.5
3"	16	390.60	414.00	16	50.8	101.60	100	63.5
4"	8	265.40	285.80	16	50.8	101.60	100	63.5
4"	10	328.70	350.00	16	50.8	101.60	100	63.5
4"	12	392.50	415.30	16	50.8	101.60	100	63.5
4"	16	520.70	547.40	16	50.8	101.60	100	63.5
6"	8	398.30	417.80	16	50.8	101.60	100	63.5
6"	10	493.20	516.00	16	50.8	101.60	100	63.5
6"	12	588.80	612.10	16	50.8	101.60	100	63.5
6"	16	781.30	807.70	16	50.8	101.60	100	63.5
8"	8	530.90	549.90	16	50.8	101.60	100	63.5
8"	10	657.60	680.50	16	50.8	101.60	100	63.5
8"	12	785.10	809.00	16	50.8	101.60	100	63.5
8"	16	1041.40	1068.30	16	50.8	101.60	100	63.5

## 24,000lb / 30,000lb

### Conveyor chain sprockets – steel fabricated

Available on request

- Larger boss diameters and distance through
- Electro galvanised
- Other pitches
- Teeth machine to accommodate flange rollers
- Plate wheels
- Flame hardened teeth
- Bush chains
- Split sprockets



Chain Pitch	No. of teeth	Pitch circle diameter P.C.D (mm)	Outer diameter O.D (mm)	Boss one side T1 (mm)	Boss Central T2 (mm)	Boss single & central dis. Thru L (mm)	Boss dia. Single & central D (mm)	Max Bore E (mm)
4"	8	265.40	288.30	20	63.50	127	150	101.60
4"	10	328.70	357.40	20	63.50	127	150	101.60
4"	12	392.50	420.40	20	63.50	127	150	101.60
4"	16	520.70	546.00	20	63.50	127	150	101.60
6"	8	398.30	422.90	20	63.50	127	150	101.60
6"	10	493.30	520.00	20	63.50	127	150	101.60
6"	12	588.80	617.20	20	63.50	127	150	101.60
6"	16	781.30	814.00	20	63.50	127	150	101.60
8"	8	531.10	555.00	20	63.50	127	150	101.60
8"	10	657.60	684.50	20	63.50	127	150	101.60
8"	12	785.10	813.00	20	63.50	127	150	101.60
8"	16	1041.40	1074.40	20	63.50	127	150	101.60
10"	8	663.70	682.70	20	63.50	127	150	101.60
10"	10	821.90	847.50	20	63.50	127	150	101.60
10"	12	981.50	1010.00	20	63.50	127	150	101.60
10"	16	1302.00	1335.00	20	63.50	127	150	101.60
12"	8	796.50	818.00	20	63.50	127	150	101.60
12"	10	986.30	1012.00	20	63.50	127	150	101.60
12"	12	1177.60	1205.00	20	63.50	127	150	101.60
12"	16	1562.30	1595.00	20	63.50	127	150	101.60

## 36,000lb / 45,000lb

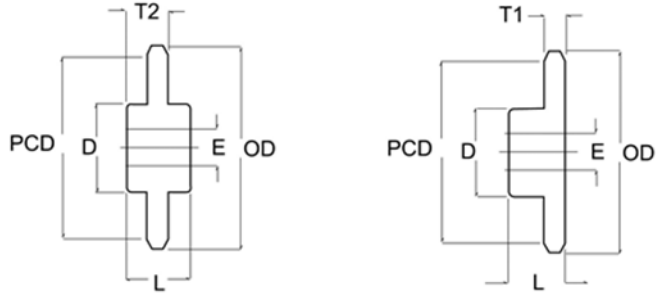
Chain Pitch	No. of teeth	Pitch circle diameter P.C.D (mm)	Outer diameter O.D (mm)	Boss one side T1 (mm)	Boss Central T2 (mm)	Boss single & central dis. Thru L (mm)	Boss dia. Single & central D (mm)	Max Bore E (mm)
6"	8	398.30	426.70	32	82.60	165.10	215.90	114.30
6"	10	493.30	529.30	32	82.60	165.10	215.90	114.30
6"	12	588.80	624.80	32	82.60	165.10	215.90	114.30
6"	16	781.10	824.20	32	82.60	165.10	215.90	114.30
8"	8	530.90	565.20	32	82.60	165.10	215.90	114.30
8"	10	657.50	691.50	32	82.60	165.10	215.90	114.30
8"	12	785.10	824.20	32	82.60	165.10	215.90	114.30
8"	16	1041.40	1085.80	32	82.60	165.10	215.90	114.30
10"	8	663.70	697.20	32	82.60	165.10	215.90	114.30
10"	10	821.90	855.50	32	82.60	165.10	215.90	114.30
10"	12	981.59	1019.80	32	82.60	165.10	215.90	114.30
10"	16	1302.00	1346.20	32	82.60	165.10	215.90	114.30
12"	8	796.50	830.60	32	82.60	165.10	215.90	114.30
12"	10	986.30	1020.30	32	82.60	165.10	215.90	114.30
12"	12	1177.60	1216.70	32	82.60	165.10	215.90	114.30
12"	16	1562.40	1606.60	32	82.60	156.10	215.90	114.30

# Combination Chain Sprockets

## Combination chain sprockets – steel fabricated

Available on request

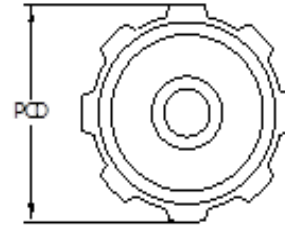
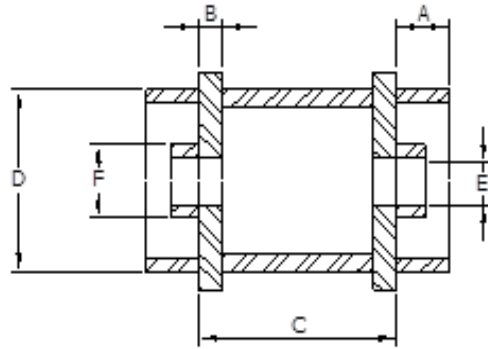
- Plain
- Larger boss diameters and distance through
- Electro galvanised
- Plate wheels
- Flame hardened teeth
- Bush chains
- Split sprockets



Chain	Chain Pitch	No. of teeth	Pitch circle diameter P.C.D (mm)	Boss single & central dis. Thru L (mm)	Boss dia. Single & central D (mm)	Max Bore E (mm)
C188	2.609ins	8	172.23	63.50	114.30	63.50
		9	193.80	63.50	114.30	63.50
		10	214.38	63.50	114.30	63.50
		11	235.20	63.50	114.30	63.50
		12	256.03	63.50	114.30	76.20
		13	276.86	63.50	114.30	76.20
		14	297.69	63.50	114.30	76.20
C131	3.075ins	8	203.96	76.20	127.00	76.20
		9	228.35	76.20	127.00	76.20
		10	252.73	76.20	127.00	76.20
		11	277.41	76.20	127.00	76.20
		12	301.75	76.20	127.00	76.20
		13	326.39	76.20	127.00	76.20
		14	351.03	76.20	127.00	76.20
C111	4.760ins	8	315.98	101.60	152.40	101.60
		9	353.57	101.60	152.40	101.60
		10	382.02	101.60	152.40	101.60
		11	429.01	101.60	152.40	101.60
		12	467.11	101.60	152.40	101.60
		13	505.20	101.60	152.40	101.60
		14	543.31	101.60	152.40	101.60
15	581.41	101.60	152.40	101.60		

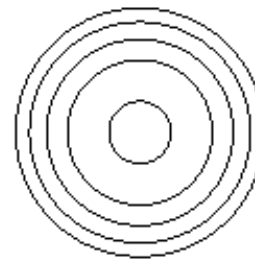
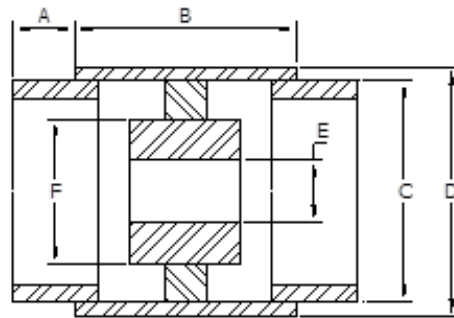
# Drag Chain Fabricated Sprockets

**Construction Type:** Steel Fabricated



Head tooth sprockets

Chain No.	No. of teeth	Head sprocket					
		PCD	A	B	C	E	F
WD102	8	331.72	95.20	32	158.80	76.20	190.50
	9	371.34	95.20	32	158.80	76.20	190.50
	10	411.00	95.20	32	158.80	76.20	190.50
WD110	8	398.27	95.20	32	231.80	76.20	190.50
	9	445.52	95.20	32	231.80	76.20	190.50
	10	493.26	95.20	32	231.80	76.20	190.50
WD112	8	530.86	95.20	32	231.80	88.90	215.90
	9	594.10	95.20	32	231.80	88.90	215.90
	10	657.60	95.20	32	231.80	88.90	215.90
WD480	8	530.86	95.20	50.80	279.40	101.60	241.30
	9	594.10	95.20	50.80	279.40	101.60	241.30
	10	657.60	95.20	50.80	279.40	101.60	241.30



Tail drum

Chain No.	No. of teeth	Tail Drum					
		PCD	A	B	D	E	F
WD102	8	331.72	95.20	282	291	76.20	190.50
	9	371.34	95.20	282	331	76.20	190.50
	10	411.00	95.20	282	371	76.20	190.50
WD110	8	398.27	95.20	353	358	76.20	190.50
	9	445.52	95.20	353	405	76.20	190.50
	10	493.26	95.20	353	453	76.20	190.50
WD112	8	530.86	95.20	353	490	88.90	215.90
	9	594.10	95.20	353	554	88.90	215.90
	10	657.60	95.20	353	617	88.90	215.90
WD480	8	530.86	95.20	373	480	101.60	241.30
	9	594.10	95.20	373	544	101.60	241.30
	10	657.60	95.20	373.10	607	101.60	241.30