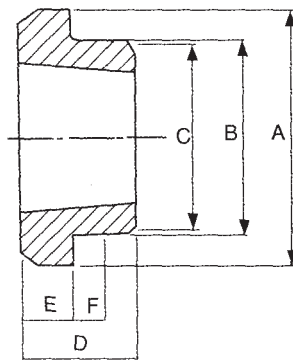


Weld-On Hubs

Taper Bore Weld-On Hubs are made of steel, drilled, tapped and taper bored to receive standard Taper Bushes. The extended flange provides a convenient means of welding hubs into fan rotors, steel pulleys, plate sprockets, impellers, agitators and many other devices, which must be firmly fastened entirely suitable for use where severe operating conditions are met. Tightening the screws contracts the bore of the bush, thereby locking it to the shaft with the equivalent of a press fit. This type of construction eliminated mounting difficulties, it also prevents loosening and wearing happened to the hub during operation.



Hub No	Bush No	A	B	C	D	E	F
WH12	1210	70	65	64.5	25	9	10
WH16-1	1610	80	75	74.5	25	9	10
WH20	2012	95	90	89.5	32	12	12
WH25	2517	115	110	109.5	44	19	15
WH30-2	3020	145	140	139.5	50	20	15
WH30-3	3030	145	140	139.5	75	20	15
WH35	3525	190	180	179.5	65	25	25
WH40	4040	200	190	189.5	101	32	30
WH45	4545	210	200	199.5	114	40	30
WH50	5050	230	220	219.5	127	40	35